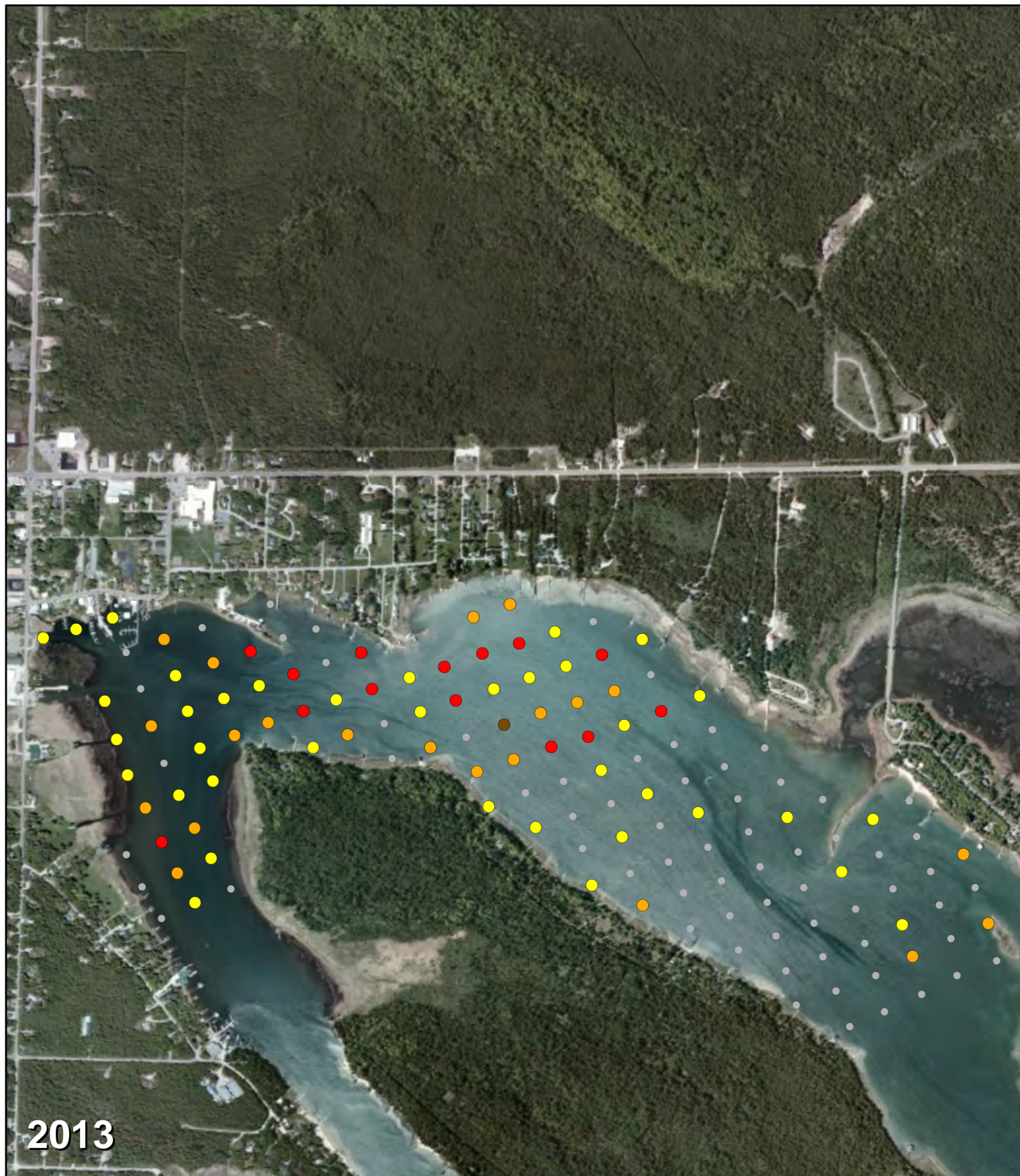
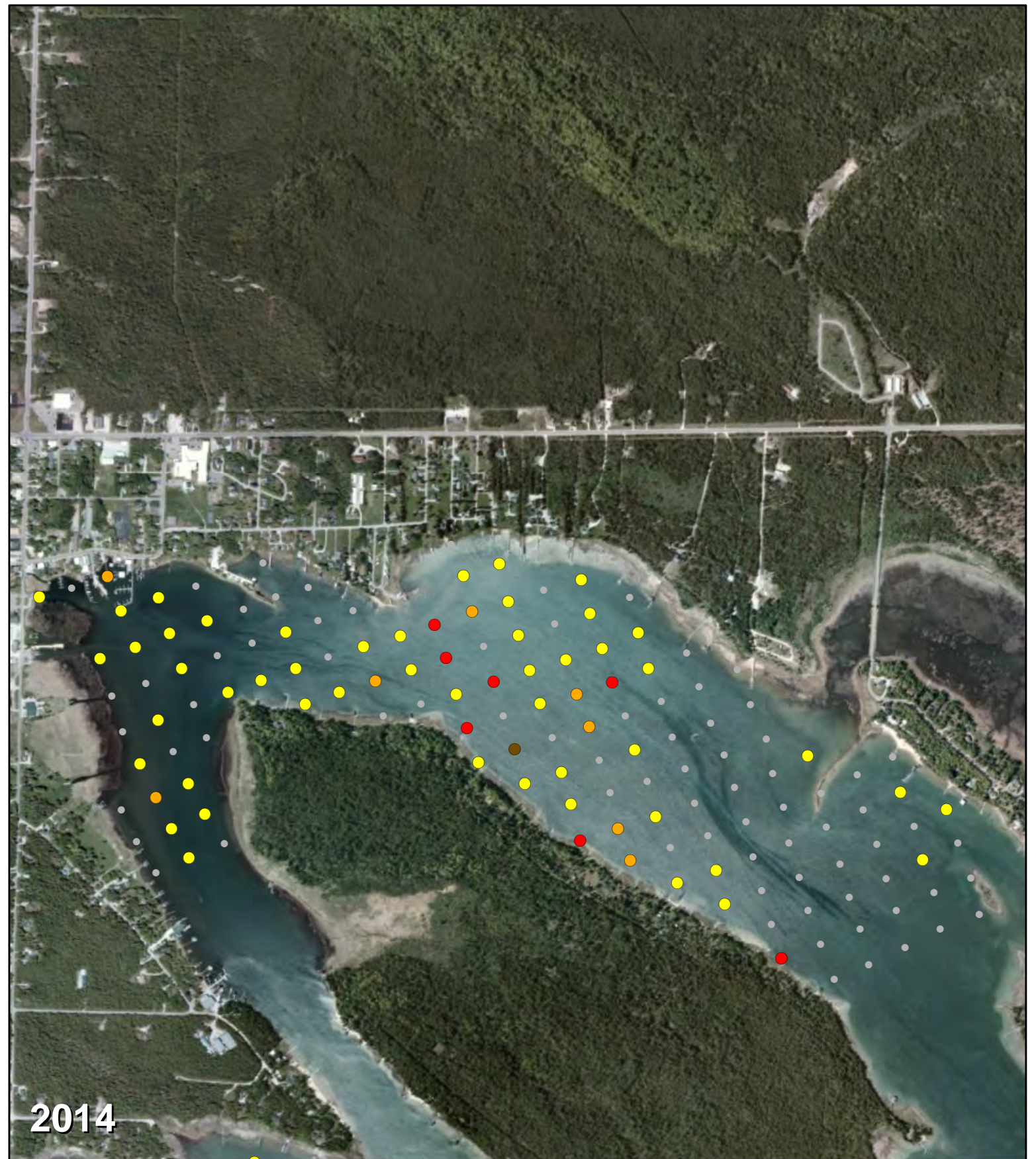


Date: 12/5/2014 Path: P:\Mifcof Solution\Data & Reports\Michigan\Les Cheneaux Islands\2014\GIS\Fig31a_Cedarville_PI_2013_2014.mxd



2013



2014

Figure 3.1.a. Point Intercept Map Comparing 2013 to 2014 at Cedarville Bay, Les Cheneaux, Michigan.

Density Category (Density Percentage)

- Category NP (0%)
- Category A (1 - 2%)
- Category B (3 - 20%)
- Category C (21 - 60%)
- Category D (61 - 100%)

